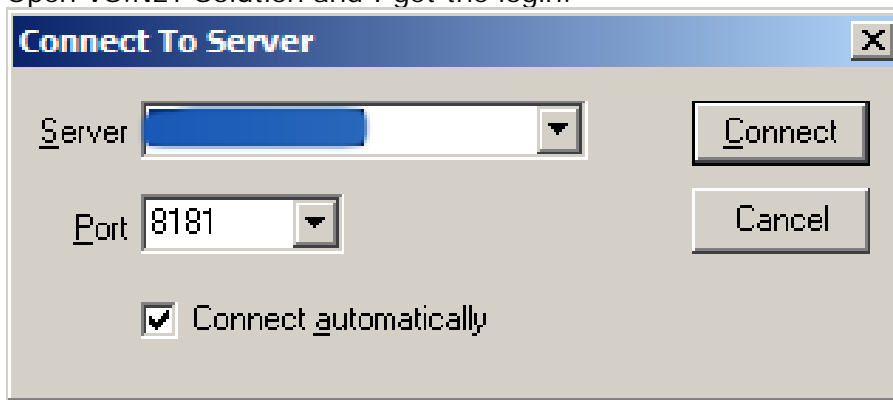
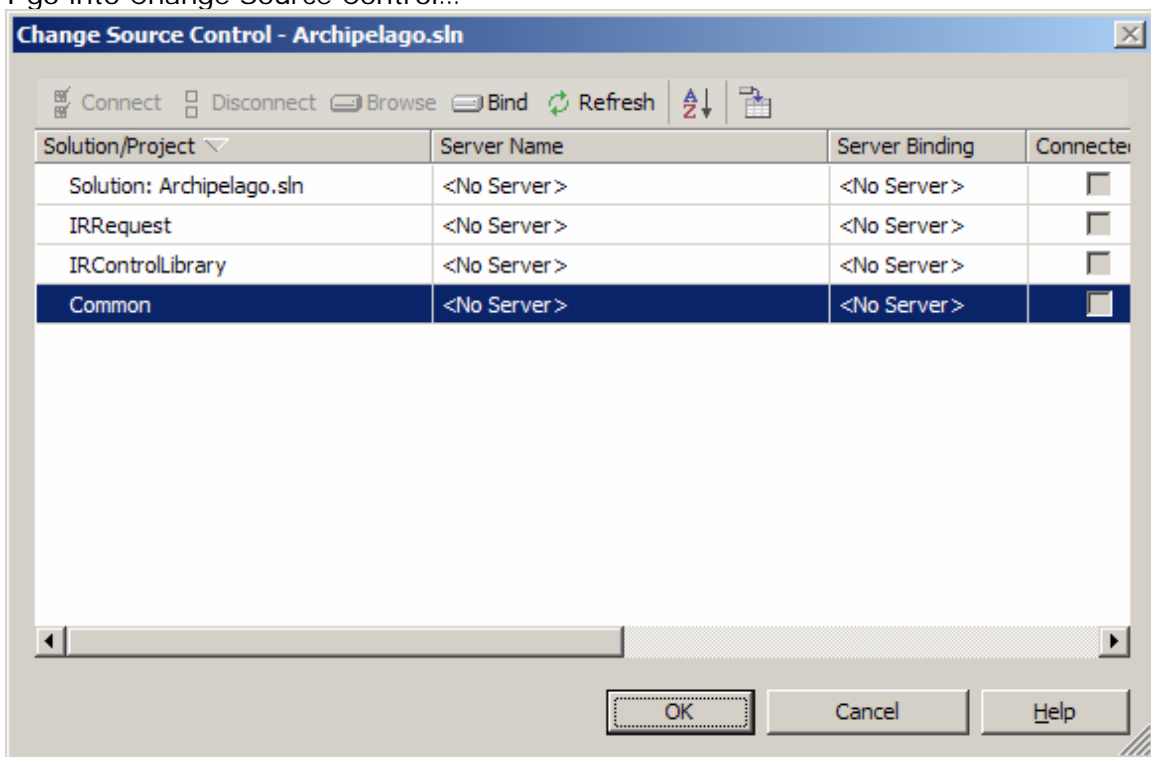


Open VS.NET Solution and I get the login:



The "Connect To Server" dialog box features a title bar with a close button. It contains two input fields: "Server" with a dropdown arrow and "Port" with a value of "8181" and a dropdown arrow. To the right are "Connect" and "Cancel" buttons. At the bottom, there is a checked checkbox labeled "Connect automatically".

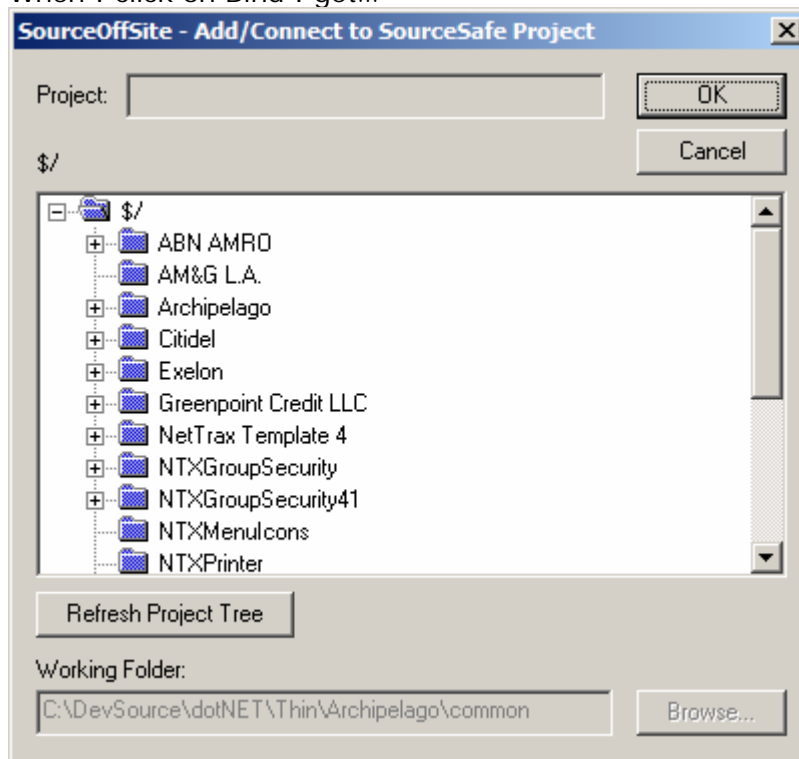
I go into Change Source Control...



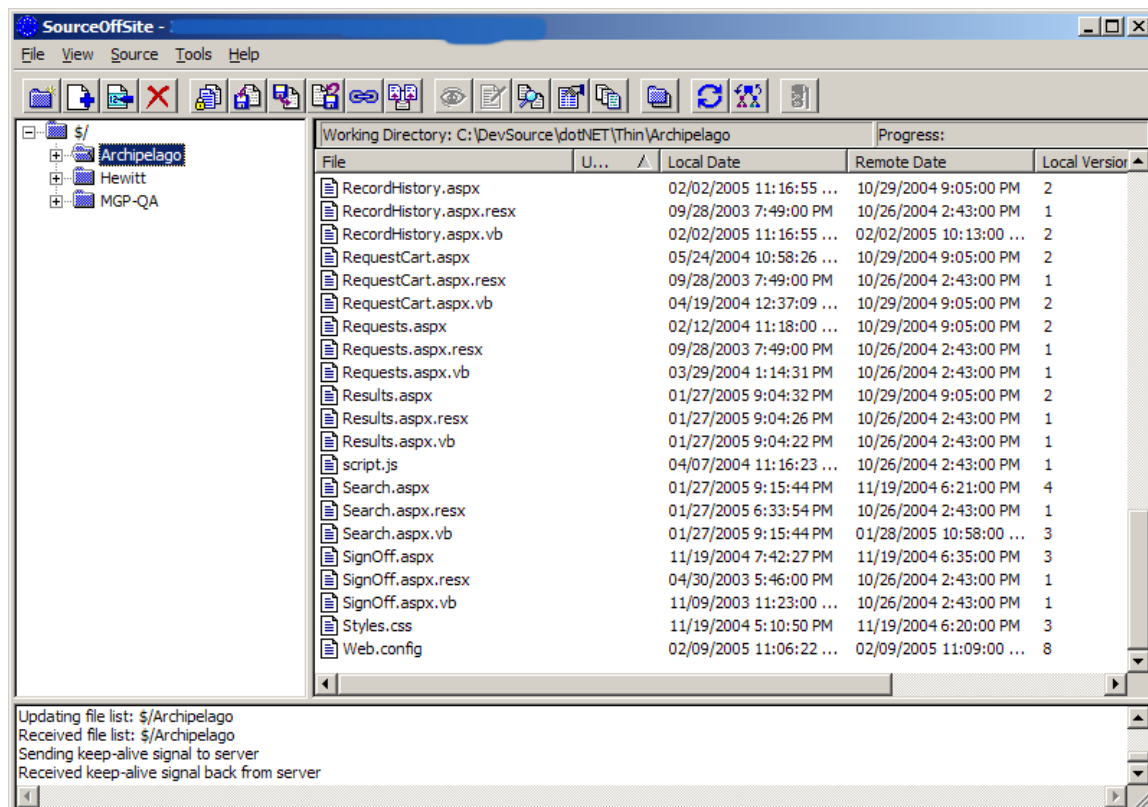
The "Change Source Control - Archipelago.sln" dialog box has a title bar with a close button. Below the title bar is a toolbar with icons for Connect, Disconnect, Browse, Bind, Refresh, and a list view icon. The main area is a table with four columns: "Solution/Project", "Server Name", "Server Binding", and "Connect". The table lists four items: "Solution: Archipelago.sln", "IRRequest", "IRControlLibrary", and "Common", all with "<No Server>" in the other columns. The "Common" row is selected. At the bottom are "OK", "Cancel", and "Help" buttons.

Solution/Project	Server Name	Server Binding	Connect
Solution: Archipelago.sln	<No Server>	<No Server>	<input type="checkbox"/>
IRRequest	<No Server>	<No Server>	<input type="checkbox"/>
IRControlLibrary	<No Server>	<No Server>	<input type="checkbox"/>
Common	<No Server>	<No Server>	<input checked="" type="checkbox"/>

When I click on Bind I get...



This is the listing for another database and it should be pointing to "dotNet" database:



I am never prompted to select the database to choose?